

COUPLINGS



TriFlex Couplings



Fenner[®]

Reliable | Trusted | Connected



Reliable | Trusted | Connected

Fenner® TriFlex Couplings

New Fenner® TriFlex cord-reinforced flexible couplings can be trusted for installation in the most diverse drive train applications, where resistance to shock stress is required and silent operation is important, such as fan, pump and compressor drives and machinery used in the agriculture, construction and marine industries.



TriFlex Coupling

Cord reinforced, flexible

Utilising the tension force principle, Fenner® TriFlex couplings offer an efficient and cost effective alternative to traditional compression couplings. They are very compact, lightweight and low maintenance.

- > Fenner® TriFlex Couplings are lightweight and compact – typically one third of the weight of a traditional compression coupling
- > Individual elements of the coupling can be replaced quickly without the need to move the motor or driven load

- > Drive train torque peaks can be effectively dampened
- > Precise oscillatory tuning of the whole drive train can be achieved with ease
- > For special projects the stiffness of the reinforced cords in Fenner® TriFlex couplings can be individually adjusted in stiffness to compensate for radial, axial and angular misalignment
- > Ideal for fans, pumps, compressors, mixers and agricultural machinery as a flexible connecting element
- > ATEX certification available

Taper Lock

- TriFlex-3FD-075 Taper
- TriFlex-3FD-096 Taper
- TriFlex-3FD-120 Taper
- TriFlex-3FD-140 Taper
- TriFlex-3FD-180 Taper
- TriFlex-3FD-220 Taper

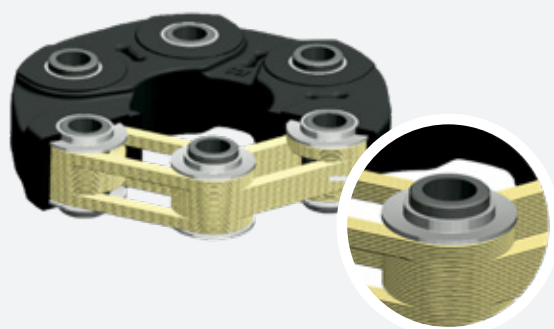
Pilot Bored

- TriFlex-3FD-075 PB
- TriFlex-3FD-096 PB
- TriFlex-3FD-120 PB
- TriFlex-3FD-140 PB
- TriFlex-3FD-180 PB
- TriFlex-3FD-220 PB



Tension Force Principle

Torque is transmitted almost exclusively via the vulcanised-in, interior cord inlays (Tenpu® fibre technology) by tension force.



The cord inlays serve to dampen torque peaks and to absorb start-up impacts. The rubber takes on a supporting and protective function for the cord sections and serves to isolate noises due to the interruption of the structure-borne noise path.



Product Code	Nominal Torque	Maximum permissible bore size	Taper lock size	Max. Rotational Speed	Radial Misalignment	Axial Misalignment	Angular Displacement	Dynamic Torsional stiffness	Weight	Diameter	Total length Taper lock type
	Nm	mm		rpm	mm	mm	°	kNm/rad	kg	mm	mm
057A0000	107	42	1108	7200	0.30	0.60	1.00	15.8	1.66	101.0	80.0
057B0000	336	60	1615	6700	0.70	0.80	1.00	29.7	4.42	132.0	120.0
057C0000	588	70	2012/15	5800	0.70	1.00	1.00	50.9	6.18	162.0	110.0
057D0000	956	80	2517	5100	0.60	1.20	1.00	82.1	11.28	195.0	141.0
057E0000	1872	102	3020	4200	1.00	1.50	1.00	135.6	19.50	237.0	157.0
057F0000	3905/3460	127	3525	3500	1.40	1.90	1.00	175.4	30.60	281.0	187.0

Product Code	Nominal Torque	Peak Load Tkmax1	Maximum permissible bore size with key	Max. Rotational Speed	Radial Misalignment	Axial Misalignment	Angular Displacement	Dynamic Torsional stiffness	Weight	Diameter	Total length Taper lock type
	Nm	Nm		rpm	mm	mm	°	kNm/rad	kg	mm	mm
057A0001	210	420	42	7200	0.30	0.60	1.00	15.8	3.1	101.0	144.0
057B0001	420	840	60	6700	0.70	0.80	1.00	29.7	6.9	132.0	172.0
057C0001	740	1480	70	5800	0.70	1.00	1.00	50.9	11.7	162.0	210.0
057D0001	1400	2800	80	5100	0.60	1.20	1.00	82.1	18	195.0	243.0
057E0001	2040	4080	102	4200	1.00	1.50	1.00	135.6	33.70	237.0	287.0
057F0001	3240	6480/3460	127	3500	1.40	1.90	1.00	175.4	57.90	281.0	347.0

*Please pay attention to the rotational direction
 These codes are for full coupling sets, if you want to purchase bolts and element packs please contact your local Fenner Authorised Distributor

Authorised Distributors:



Belgium

ERIKS Power Transmission
Technology Centre Moorsele / CET MOTOREN
Muizelstraat 8
8560 Gullegem Moorsele
Belgium
Tel: +32 (0) 56 41 47 65
Fax: +32 (0) 56 40 34 60
Email: mgd@eriks.be

ERIKS Technology Centre Mol
Nijverheidsstraat 13, Industrieterrein II
B-2400 Mol
Belgium
Tel: +32 (0) 14 34 64 84
Fax: +32 (0) 14 31 58 15
Email: powertransmissions@eriks.be

Germany

ERIKS Deutschland GmbH
Business Unit Wälzlager / Mechanische Antriebstechnik
Robert-Hesse-Str. 11
D-30827 Garbsen
Germany
Tel: +49 (0)511 27998-507
Email: antriebstechnik@eriks.de

Netherlands

ERIKS bv
Aandrijftechniek Roermond
Albert Einsteinweg 8
6045 GX Roermond
Postbus 1268
6040 KG Roermond
Tel: (0475) 37 22 33
Fax: (0475) 32 75 40
Email: info.roermond@eriks.nl
www.eriks.nl

Switzerland

Maagtechnic AG
Sonnentalstrasse 8
8600 Dübendorf
Schweiz
Tel: +41 848 111 333
Fax: +41 848 111 334
Email: info-ch@maagtechnic.com

UK & Ireland

ERIKS UK & Ireland
Amber Way
Halesowen
West Midlands
B62 8WG
Tel: +44 (0)121 508 6000
Email: enquiries@eriks.co.uk